

FOUNDATIONS & MUD SLABS

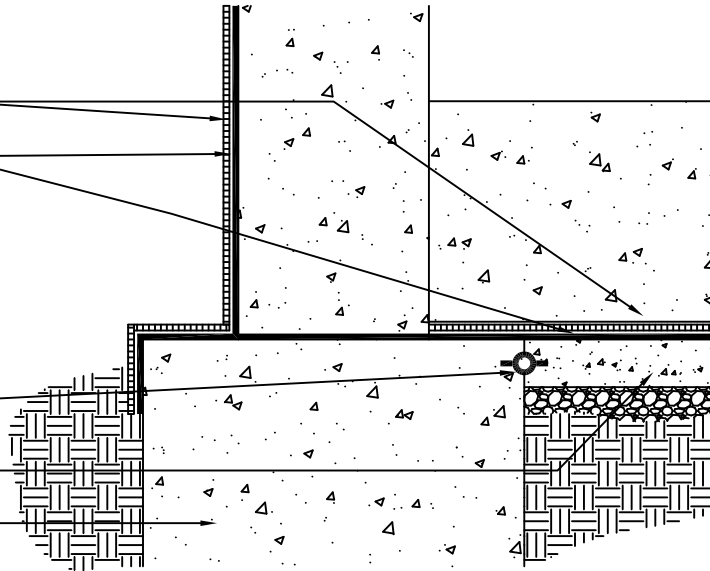
APPROVED PROTECTION

MONOLITHIC MEMBRANE
6125-FR

WATER STOP

MUD SLAB

PILE CAP/
FOOTING



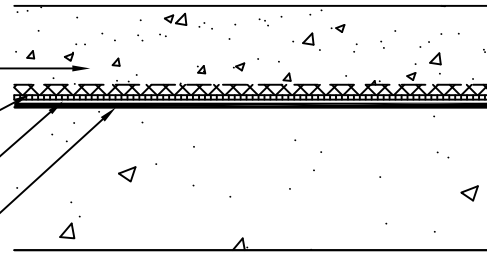
BETWEEN SLAB

CONCRETE TOPPING SLAB

HYDRODRAIN (OPTIONAL)

APPROVED PROTECTION

MONOLITHIC MEMBRANE
6125-FR

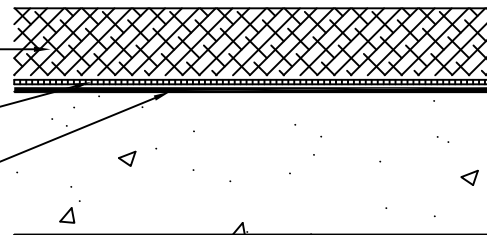


UNDER ASPHALT PAVING

ASPHALT PAVING

APPROVED PROTECTION

MONOLITHIC MEMBRANE
6125-FR



NOTES:

1. WHEN STYROFOAM IS INSTALLED DIRECTLY UNDER AN IMPERVIOUS SURFACE (i.e., TOPPING SLAB, SETTING BED, ETC.) AN AIR LAYER (APPROVED HYDRODRAIN) MUST BE INSTALLED ON TOP OF THE FOAM.
2. IF HYDRODRAIN OR INSULATION IS TO BE INSTALLED UNDER ASPHALT PAVEMENT A COMPACTED STONE BASE IS REQUIRED. CONTACT HYDROTECH FOR ADDITIONAL SUGGESTIONS REGARDING PLACEMENT OF ASPHALT PAVEMENT DIRECTLY OVER MM6125.



**Monolithic
Membrane
6125-FR**
WATERPROOFING SYSTEMS

AMERICAN HYDROTECH, INC.

TYPICAL APPLICATION

SCALE: NONE
DATE: 11/02/20

W-2A